



## Aritco 7000 Prime collection



### **Aritco 7000** - our bestselling platform lift

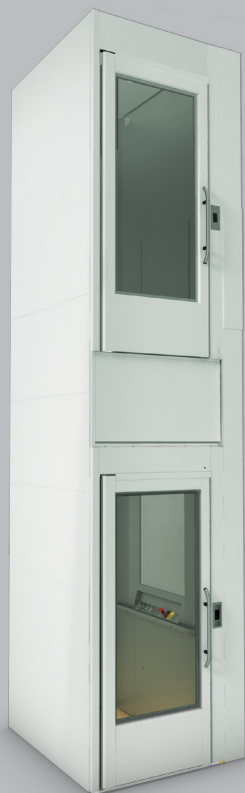
The lift is designed to meet all requirements for quality, safety and service life. It is a perfect fit for tough and demanding environments such as schools, shops and residential buildings.

Several advantages offered by Aritco 7000:

- Design, sizes and options tailored to public environments
- 95% recyclable materials
- 'A' rated energy consumption according to VDI4707
- Patented screw/nut technology (no oil that can leak)
- Requires minimum maintenance
- The lowest maintenance and operating costs on the market

# Aritco 7000

## Prime collection

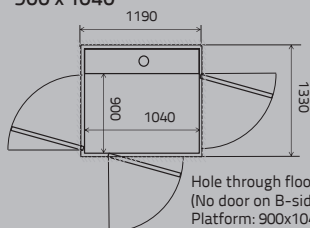


Length

Width

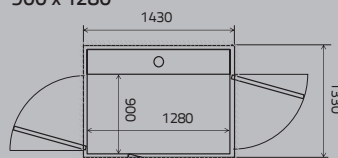
Wheelchair Type A and B according to EN 12183/EN 12184.

900 x 1040



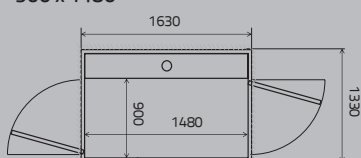
Hole through floor: 1330x1190 mm  
(No door on B-side: 1305x1190)  
Platform: 900x1040 mm  
Load: 250 kg  
Wheelchair: -

900 x 1280



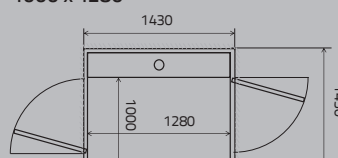
Hole through floor: 1330x1430 mm  
(No door on B-side: 1305x1430)  
Platform: 900x1280 mm  
Load: 410 kg  
Wheelchair: Lone user or type A

900 x 1480



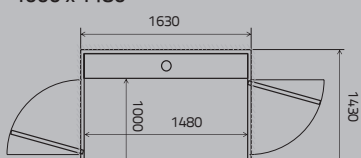
Hole through floor: 1330x1630 mm  
(No door on B-side: 1305x1630)  
Platform: 900x1480 mm  
Load: 410, 500 kg  
Wheelchair: A or B with attendant

1000 x 1280



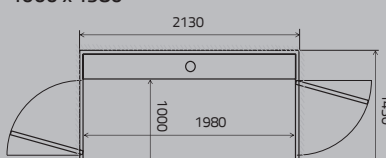
Hole through floor: 1430x1430 mm  
(No door on B-side: 1405x1430)  
Platform: 1000x1280 mm  
Load: 410 kg  
Wheelchair: Lone user or type A

1000 x 1480



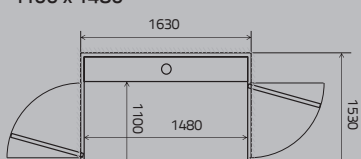
Hole through floor: 1430x1630 mm  
(No door on B-side: 1405x1630)  
Platform: 1000x1480 mm  
Load: 410, 500 kg  
Wheelchair: A or B with attendant

1000 x 1980



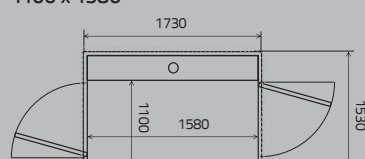
Hole through floor: 1430x2130 mm  
(No door on B-side: 1405x2130)  
Platform: 1000x1980 mm  
Load: 500 kg  
Wheelchair: A or B with attendant

1100 x 1480



Hole through floor: 1530x1630 mm  
(No door on B-side: 1505x1630)  
Platform: 1100x1480 mm  
Load: 410, 500 kg  
Wheelchair: A or B with attendant,  
adjacent entry.

1100 x 1580



Hole through floor: 1530x1730 mm  
(No door on B-side: 1505x1730)  
Platform: 1100x1580 mm  
Load: 500 kg  
Wheelchair: A or B with attendant,  
adjacent entry.

### Dimensions

Platform width ..... 900-1100 mm  
Platform length ..... 1040-1980 mm  
Travel height ..... 250-13000 mm

Hole through floor width ..... 1305-1530 mm  
Hole through floor length ..... 1190-2130 mm  
Top height ..... 2240 mm

Height of door opening\* .... 1800, 1900, 2000, 2100 mm  
Height of door opening\*\* ..... 1100-1600 mm  
Width of door opening ..... 800, 900, 1000 mm

\*Full-height door \*\*Half-height door

**Drive system:** Patented screw/nut system

**Rated speed:** max. 0.15 m/s

**Platform control:** "Hold to run", the button has to be kept pressed during the ride

**Landing control:** One-touch call

**Technical compliance:** European Machinery Directive 2006/42/EC  
European standard EN 81-41

**Rated load:** 250-500 kg / 2-5 persons

**Number of stops:** max. 6

**Number of doors:** max 2 doors per floor

**Pit:** 50 mm (no pit is required when there is a ramp)

**Environment:** Indoors and outdoors

**Power supply:** 1-phase 230V 50Hz/9A/16A slow  
3-phase 230V 50Hz/9A/16A slow  
3-phase 400V 50Hz/5.2A/16A slow

**Emergency lowering:** Battery-powered

**Control voltage:** 24 V

**Motor:** 2.2 kW

For more information, please, refer to our product catalogue or visit our website.

Due to the continuous product development at the company, the information may change without prior notice.